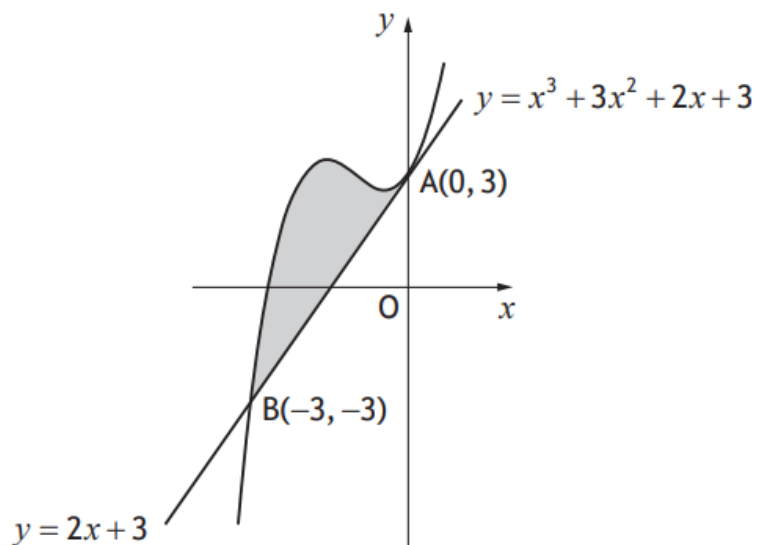




The line with equation $y = 2x + 3$ is a tangent to the curve with equation $y = x^3 + 3x^2 + 2x + 3$ at $A(0, 3)$, as shown.



The line meets the curve again at $B(-3, -3)$.

Find the area enclosed by the line and the curve.

5

Answer:

$$\frac{27}{4} \text{ units}^2$$