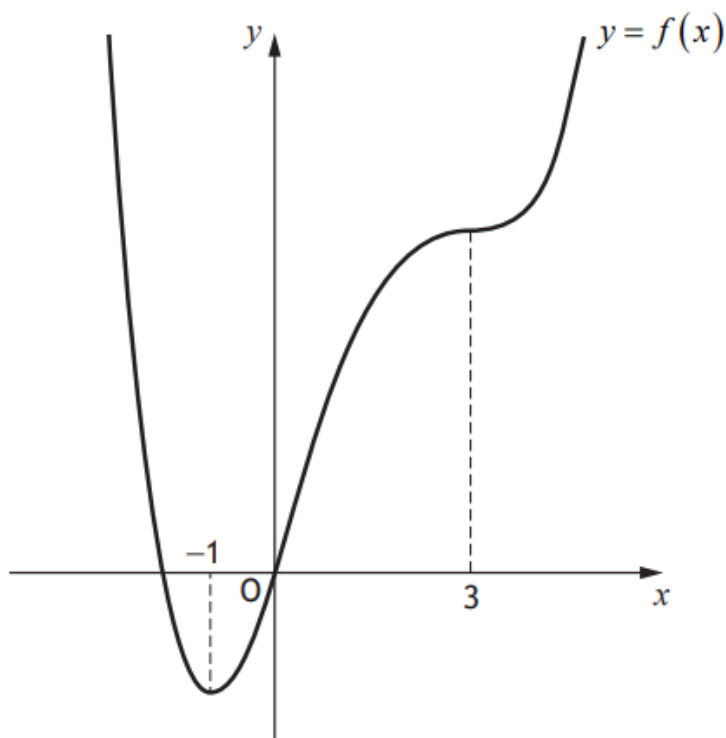


Higher Maths
SQA 2021 Paper 2
Question 7



The diagram shows the graph of $y = f(x)$, which has stationary points at $x = -1$ and $x = 3$.



On the diagram in your answer booklet, sketch a possible graph of $y = f'(x)$.

3

Answer:

Roots -1 and 3

Turning point at $(3, 0)$

Correct shape, passing through $(-1, 0)$ with a positive gradient at $(-1, 0)$

