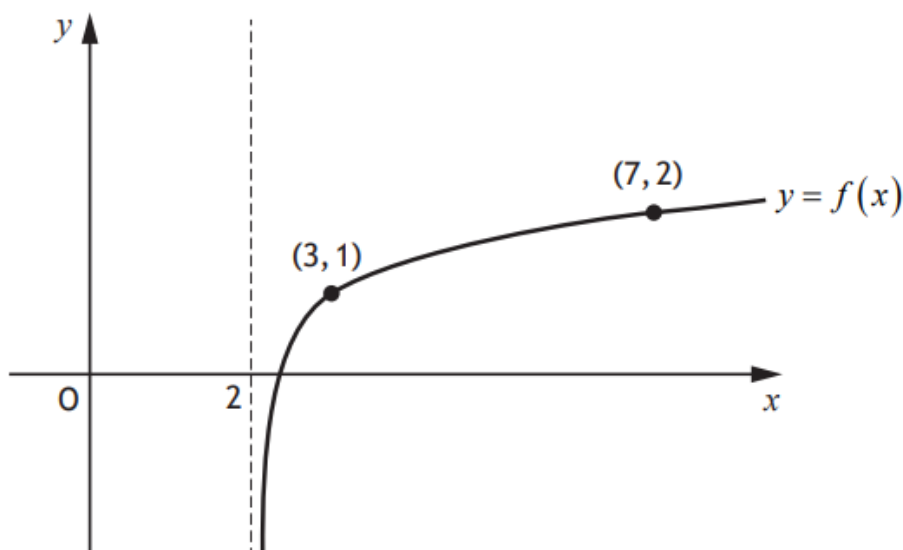


Higher Maths
SQA 2021 Paper 1
Question 17



A logarithmic function, f , is defined for $x > 2$.

The diagram shows the graph of $y = f(x)$.

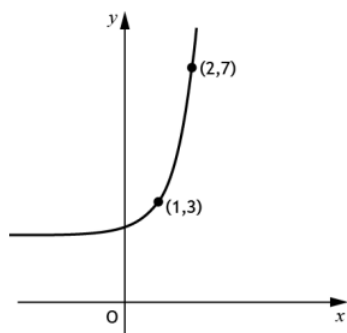


The inverse function, $f^{-1}(x)$, exists.

- (a) On the diagram in your answer booklet, sketch the graph of the inverse function. 2
- (b) Given that $f(x) = \log_5(x-2) + 1$, find the coordinates of the point where the graph of $f^{-1}(x)$ crosses the y -axis. 2

Answers:

(a)



(b) $\left(0, \frac{11}{5}\right)$