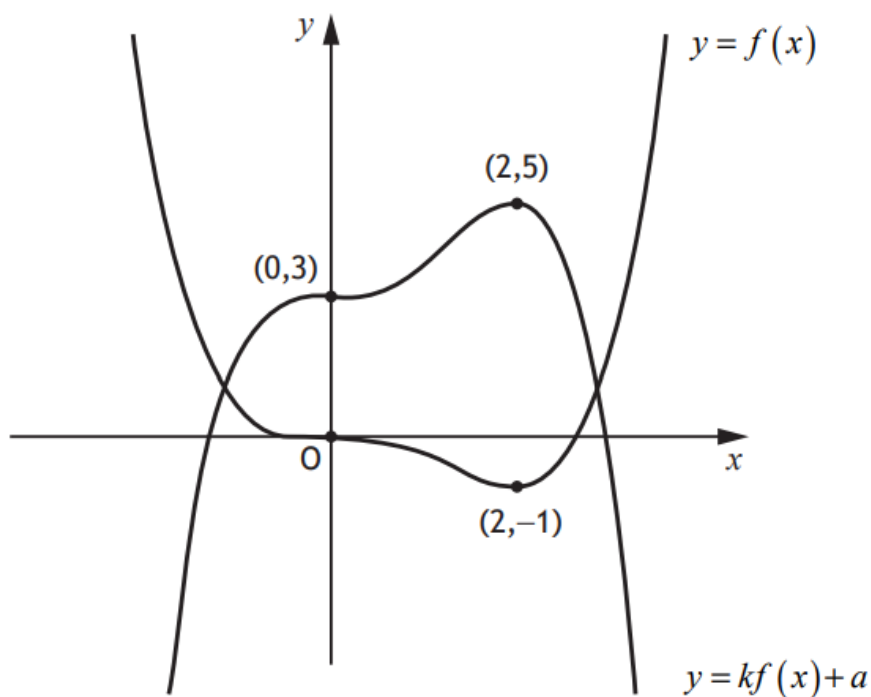


Higher Maths  
SQA 2019 Paper 1  
Question 10



The diagram shows the graphs with equations  $y = f(x)$  and  $y = kf(x) + a$ .



- (a) State the value of  $a$ . 1
- (b) Find the value of  $k$ . 1

Answers:

- (a)  $a = 3$
- (b)  $k = -2$