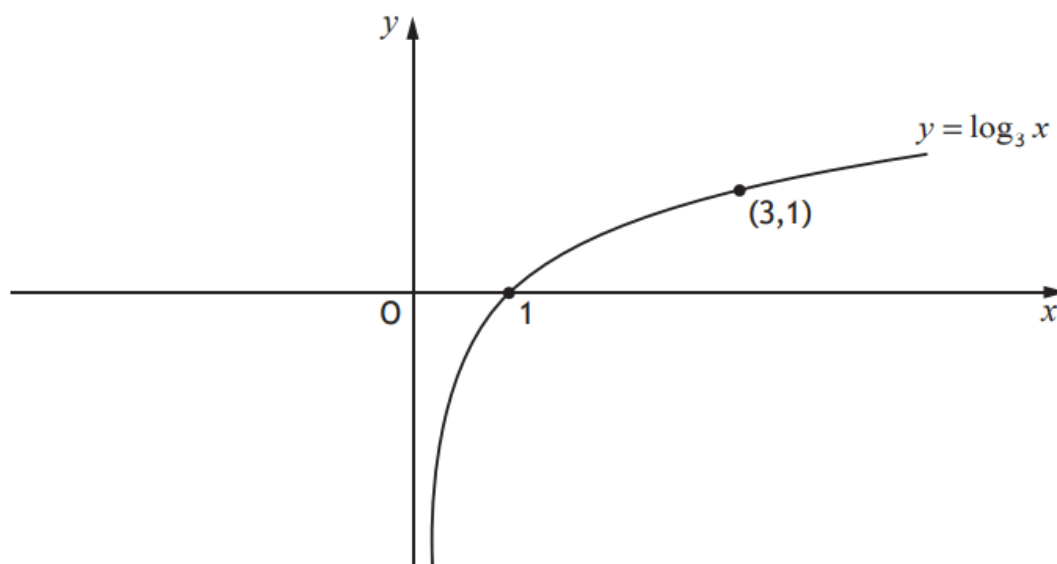


Higher Maths
SQA 2018 Paper 1
Question 11



The diagram shows the curve with equation $y = \log_3 x$.



- (a) On the diagram in your answer booklet, sketch the curve with equation $y = 1 - \log_3 x$. 2
- (b) Determine the exact value of the x -coordinate of the point of intersection of the two curves. 3

Answers:

- (a) Curve reflected in x -axis and translated 1 unit vertically upwards.
- (b) $\sqrt{3}$ or $3^{\frac{1}{2}}$